



2022 ANNUAL REPORT

Missouri District

THE LUTHERAN CHURCH — MISSOURI SYNOD

OUR MISSION

To serve and encourage congregations to fulfill the Great Commission and promote unity of the true faith.



- 1,627 Rostered Workers
- 291 Congregations
- 49 Elementary Schools
- 45 Early Childhood Centers
- 9 High Schools

CRITICAL TARGETS

Church Worker Recruitment and Retention	Family Discipleship Expansion
Community Engagement	Shared Ministry Collaboration

STAYING CONNECTED

Stay up to date on all things happening around the District with emails: weekly messages from President Hagan, as well as news and updates like installations, obituaries, and current news.



DEAR PARTNERS IN THE GOSPEL,

Greetings in the name of Jesus Christ, who is the same yesterday, today and forever.



During the seven seasons of the television show *The West Wing*, the fictional president, Jed Bartlet, frequently asks his staff, “What’s next?” It was his way of moving the conversation on to the next issue that required the attention of the president and his staff. In the President’s report to the Twenty-First Missouri District Convention, I noted what things were done during the last four years. However, in my acceptance speech I talked about “What’s next?”

The challenges that our congregations are facing today are significant. From a hostile culture to aging and shrinking membership, the congregations and schools of the Missouri District are dealing with a host of issues that cannot be ignored. We also cannot retreat from the challenges and talk about the way things used to be. Instead, we are striving to faithfully serve Christ in whatever comes next.

The Board of Directors of the Missouri District has adopted a strategic plan for this triennium that focuses on four critical targets.

CHURCH WORKER RECRUITMENT AND RETENTION

Professional church workers are required to provide leadership and service to congregations and schools across our District and Synod. We are in a worker crisis with large numbers of vacancies in congregations, schools, and other ministries. This target will guide our work to train and retain workers, approaching the crisis with various solutions.

FAMILY DISCIPLESHIP EXPANSION

Our families, grounded in Christ, must make up the core of our congregations and ministries. To achieve and sustain this, we are devoting time and resources this triennium to the development of specific programming, resources, and coaching that will assist our congregations in Christian family discipleship.

COMMUNITY ENGAGEMENT

The Lord has placed us in the world as His people sent to proclaim the Gospel in word and deed. This requires all of us, as congregations and individuals, to engage our communities and bring the love of Jesus to all we meet. During this triennium, we will accelerate our community engagement and work together to be the Body of Christ in the world.

SHARED MINISTRY COLLABORATION

The Missouri District places a priority on congregations “walking together” in the truth and in God’s mission. Encouraging congregations to collaborate in various ministry areas provides mutual benefits and greater mission opportunities. Shared ministry exercises good stewardship of our collective God-given gifts. It embraces congregations of all sizes and settings. This triennium will see the development of new shared ministry partnerships and highlight them through our communications.

Please note that each of these targets has a future component to it as we strive for new workers, children and youth, new Christians, and even new models for congregational collaboration. Our prayer is that God will richly bless our work as we serve Christ in whatever comes next. Thank you for your partnership in this work!

Fraternally in Christ,

R. Lee Hagan

President Rev. Dr. R. Lee Hagan



STATEWIDE SERVANT EVENT SHINES FOR SECOND YEAR

For the second year in a row, participants in *SHINE!*, the Missouri District's statewide servant event, were a witness for Jesus Christ and served their neighbors in love. The ten day event, held April 22-May 1, 2022, saw more than 120 groups from congregations and schools across the state. More than 8,000 adults and children wore matching green t-shirts featuring the servant event logo and the Matthew 5:16 theme verse. Groups addressed a variety of concerns in their communities—collecting and distributing food for the hungry, cleaning and landscaping parks, visiting shut-ins, advocating for the unborn, and more.

“Once again, we stand in awe of the gifts God has given His children and the way the Body of Christ comes together to *SHINE!* in His Kingdom,” says District coordinator Leah Sieveking. “Thank you to all who participated and to our generous sponsors, LCEF and Rod’s Sports. We’re blessed to be able to serve side-by-side in this way.”

Our project this year was helping clean up the city park that is directly behind our property. We did this in conjunction with a clean-up day planned by the city and desired to take care of the creation near our property. Half of our group were youth in the congregation, and this was a great way to help them learn to take care of God’s creation. It was also great to share pictures of other groups and what they were doing as it brings a sense of community for people across the state. Cleaning the park was great, and at the same time so was the fellowship of all the individuals that were helping. It is fantastic to see people of all ages get together to serve the community.

Rev. Weston Wildauer
Good Shepherd, Cape Girardeau

The Missouri District is pleased to share that *SHINE!* will continue into a third year! Mark your calendars for April 14-23, 2023, and start looking for ways to serve in your community. Stay tuned to District news for more information on registration in the months ahead.





2022 CONVENTION

The Missouri District held its Twenty-First regular convention from June 12-14, 2022, in Columbia. Business was conducted under the theme of “Tell the Next Generation” drawn from Psalm 78:6-7. Delegates re-elected the Rev. Dr. R. Lee Hagan to a third term as District President on the first ballot. Rev. William Marler, Rev. Kristopher Morris (Christ the King, Lake Ozark), Rev. Brian Thieme (Trinity, Columbia), and Rev. Jason Shaw (St. Paul, Jackson) were elected first through fourth Vice President, respectively.

Attendees were blessed to learn from Rev. Dr. Mark Kiessling, Director of LCMS Youth Ministry, who served as essayist. Speaking to the convention theme, Kiessling commented that despite youth growing up surrounded by identity issues, pressures of social media, and cancel culture, that Jesus gives calm and hope to every generation. While giving an overview of Synod, LCMS President Matthew Harrison echoed this perspective. “We have nothing but Christ and the resurrection ahead of us,” he told listeners.

All Missouri District congregations and individual households were invited to participate in the convention offering—an opportunity to invest in the work God has called us to do and to encourage one another as we seek to “Tell the Next Generation.” The designation for the offering is twofold: defray the costs associated with training coaches for the “Tell the Next Generation” initiative and help fund an upcoming youth summit that will teach high school students about leadership roles within the church. To date, the convention offering now totals more than \$20,000. May these gifts be used for God’s glory!

CONVENTION RESOLUTIONS INCLUDED:

- Equipping congregations and schools to lead others in teaching the faith in the home
- Addressing the shortage of professional church workers
- Asking Synod to clarify its stance on various life and culture matters
- Encouraging ministry among immigrants, college students, and military personnel



DISASTER RELIEF: A BLESSING AND A PRIVILEGE

Though almost a year has passed, Pastor Randall Bell of Christ Lutheran in Augusta continues to see homeowners working on repairs after the storms of December 10-11, 2021. He considers it both a blessing and a privilege to pray for and show God’s love to those who have been impacted. In the days after the storm, Pastor Bell was quick to share, “Nothing can take away what we have in Jesus Christ our Savior.”

One member of Pastor Bell’s flock, Vernon, lost both his wife and his home during the storm. Having been thrown several hundred feet when the tornado hit, Vernon regained consciousness in the ambulance to find his copy of the New Testament—one he was given while serving in the military in the 1950s—placed next to him by emergency workers. “What a wonderful way for God to remind him that He was always with him and with his wife, that He never left them even in the midst of the storm,” adds Pastor Bell.

That same evening, St. Trinity in St. Louis sustained extensive damage to the church roof and surrounding structures. Just days later a fire broke out in the attic above the sanctuary, adding to the damage. While the recovery process has been slow for the congregation, it has given them the opportunity to make repairs in ways that will make the building even more secure than it was before the storm.

For those hurting after this storm in December, and for all those impacted by disasters, the Missouri District is blessed to have Lutheran Early Response Teams (LERT) stationed throughout the state. LERT volunteers are equipped to handle chainsaws, prepare meals, distribute supplies, offer prayers, and more. According to District Disaster Coordinator, Rev. Karl Gibbs, this type of response goes well beyond addressing the physical needs of a community. “Our primary goal is to point them to Christ Jesus and to the full restoration that He alone offers,” says Pastor Gibbs. He also shares how LERT training is available to anyone age fourteen and older. Please reach out the Missouri District for information on how your congregation can hold one of these training sessions.



Our sincerest thanks to the many donors who generously supported relief efforts from the December 2021 storms. We continue to work with St. Trinity as they make repairs. Offerings were also shared with the Mid-South District as the same storm caused significant damage to western Kentucky.



DISTRICT-SUPPORTED MISSIONS

The Missouri District is thankful to the many congregations, foundations, and individuals who so generously provide for mission work in our state. Included here is a sampling of exciting work from a variety of ministries. Turn to page fifteen of this report to see the full mission grant list. Thank you for your continued support and prayers.

CHRISTIAN FRIENDS OF NEW AMERICANS

St. Louis-based mission agency, Christian Friends of New Americans (CFNA) keeps their focus simple: Connect with new Americans, and then connect them to church. And while the organization does provide valuable social services, it is their drive to share the love of Christ and connect people to established Lutheran congregations that truly sets them apart.

Refugees arriving in the metro area will have a variety of concerns, and CFNA works with a host of volunteers to begin addressing them. Health and wellness screenings, English as a Second Language classes, driver education, sewing lessons, and afterschool tutoring are just a few of the offerings of CFNA to the immigrant population of south St. Louis. With each of these gatherings, the Gospel of Jesus Christ is heartily shared. As relationships begin to grow, LCMS churches in the area welcome these families into their midst and become part of the fabric of the congregation.

CAMPUS MINISTRY NETWORK

In order to provide support for all LCMS campus ministry sites throughout the state, the Missouri District formed the Campus Ministry Network several years ago. Representatives from participating schools regularly meet, share best practices, and offer one another support in this unique mission field. Rev. Dr. Kent Pierce, pastor at Campus Lutheran in Columbia, serves as facilitator of the network. This school year the group was pleased to welcome representatives from William Jewel College and College of the Ozarks into the fold—bringing the number of participating schools with Lutheran student groups to eighteen.

An exciting joint effort of the network happens in the late winter of each year. “Perhaps the most exciting item to report for the Campus Ministry Network during the first quarter is the GO! Leadership Retreat that was held at Campus Lutheran in Columbia on February 11-12,” shares Rev. Dr. Pierce. “A total of thirty students participated, coming from seven different schools. In addition to students from Missouri, there were also participants from Lincoln, NE and Macomb, IL.”

SHARED MINISTRY

“Shared Ministry Collaboration” is a key component of the Missouri District’s strategic plan—enabling congregations and the District to share resources and serve God’s Kingdom in new and different ways. Throughout the state, these partnerships exist in the Bootheel, Kansas City, Arnold-Barnhart, and more. For the eleven congregations in the Rolla Circuit, shared ministry plans include calling a worker next summer to serve the entire circuit in children and family ministry. Rev. Dr. Nathan Kuhlman, pastor at Redeemer Lutheran in Rolla, knows exactly how this concept came to be and what sustains it. “God has been orchestrating this for many years, bringing people to the table with unique gift sets, talents, and resources to accomplish together what we could not have done alone,” he shares. “It is a beautiful thing, seeing pastors, church leadership, and laity working together, shoulder to shoulder toward a common goal.”

Collaborating in small ways—shared worship services, *SHINE!* projects, etc.—over time has paved the way for more in-depth conversations and bigger projects within the circuit, like sharing a worker. “There is no rushing relationships, especially in shared ministry,” says Pastor Kuhlman. Laying this groundwork, though, is necessary for the journey that lies ahead. “Shared ministry is exciting, challenging, exuberant, joy-filled, frustrating at times, fulfilling, and yes, lots of hard work. It moves fast, but is also slow-going, with occasional bumps and bruises along the way. But wow! What a ride!” Kuhlman concludes.





TELL THE NEXT GENERATION

The Missouri District has trained Tell the Next Generation Family Discipleship coaches from across the state to work with pastors, congregations, and schools who are ready and willing to embrace home-centered, church-supported Family Discipleship. Fourteen coaches were trained in January 2022 and have continued to connect through Zoom meetings with the Concordia Center for the Family trainer, Dr. Ben Freudenburg. The initiative was launched at the Missouri District Convention in June with the approval of Life Together Resolution 2-01, encouraging congregations to participate in coach-led training.

Every congregation will be mailed more information about the Tell the Next Generation coaching. The Missouri District Family Discipleship coaching facilitator, Pam Nummela, will connect coaches with pastors, congregations, and schools. Watch for the mailing and contact Pam at family@mo.lcms.org if you have questions.

Trained coaches include Rev. Steven Andrews (St. Matthew, Lee's Summit), Angie Brenner (DCE at Trinity, Jefferson City), Linda Horton (DCE at St. Paul, St. Joseph), Hannah Knehans (Director of Family Life at Trinity, Springfield), Heidi Koehler (DCE at St. Andrew, Cape Girardeau), Rev. Dr. Nathan Kuhlman (Redeemer, Rolla), Rev. Peter Lange (Faith, Eldon), Mandy McDonald (teacher at Immanuel, Jefferson City), Pam Nummela (DCE Emeritus, St. Louis), Rev. Josh Schmidt (St. Paul, Jackson), Christina Stackle (DCE at Peace, St. Louis), Maggie Warner (DCE at Immanuel, St. Charles), and Larry Yochum (DCE at St. John, Arnold). Dan Kreienkamp represented the Missouri District.

Look to District communication for stories featuring what families are doing to intentionally share their love and faith in Jesus from generation to generation, in partnership with their congregation. May God richly bless this effort with our families for an abundant faith-filled life on earth and an eternity together in the home our Father in heaven has prepared for us.

Pictured below are second graders at St. Paul's Lutheran School in Concordia. These second graders received these "big kid" Bibles as part of their second grade milestones. Resources like these—and more to come—help build connections among home, church, and school, shifting focus to providing resources for families to use in their homes.



One of the primary concerns of our congregations today is the retention of children and youth. We have trained Tell the Next Generation coaches to assist congregations in equipping parents in their vital role of faith formation in the home. We hope that congregations will contact the District office to ask for help in this critical area.

Rev. Dr. R. Lee Hagan
President



NEW DIRECTOR OF SCHOOLS

The Missouri District is pleased to announce that Joshua Swartz has accepted the call to serve as Director of Schools. Joshua previously served as principal of St. Lorenz Lutheran School in Frankenmuth, Michigan.

“I cannot think of a more joyful vocation than to share in such a ministry with our Lutheran congregations and schools for the sake of the Gospel to all those who may hear it. I am excited to dive in, listen, learn, resource, equip and serve alongside so many Lutheran early childhood centers, elementary schools, and high schools in the Missouri District.

Together, with Christ as our Rock, will we be able to build up the workers for the harvest field, reinvigorate our current church workers and youth through care and support, along with intentionally walking alongside our families—showing how beautiful it is to live with Jesus. Through Christ we can do all things, and because of Him opportunities for Kingdom growth abounds!”

Joshua Swartz, Director of Schools

NEW TAX CREDIT PROGRAM A BLESSING TO LCMS STUDENTS

On July 1, 2022, the state of Missouri launched MOScholars—a new tax credit program to provide educational scholarships for qualifying K-12 students attending private institutions. The Missouri District–LCMS is blessed to be an Educational Assistance Organization within this program, enabling us to use participant tax dollars to walk with students and their families as they seek to defray the cost of tuition at our Lutheran schools. It’s an exciting opportunity for everyone involved, and you are invited to join us in this new endeavor.

Head to the Missouri District’s website for easy access to the state’s MOScholars webpage. There you’ll find details on tax credit reservation amounts, number of years credits can be transferred, and more. This process allows you as the taxpayer to direct your tax dollars to a cause you feel strongly about—Lutheran education. At no additional cost and with minimal effort, it’s a win for taxpayers, students, families, and LCMS schools in our state. Thank you for your participation in MOScholars through the Missouri District.



“YOU WERE THERE!”



In the final scene of *The Wizard of Oz*, Dorothy wakes from her dream surrounded by everyone she loves. In her animated state, she tries to explain how the group had gone on the adventure with her. “But it wasn’t a dream. It was a place. And you...and you...and you...and you were there!” Dorothy exclaims.

From this annual report, our hope is that you can see the last twelve months of mission and ministry in the Missouri District were not a dream—but a time filled with very real and exciting opportunities for sharing the Gospel of Jesus Christ. In our joys and our challenges, God’s goodness and mercy have been constant companions (Psalm 23:6)...and you were there.

Thank you for your prayers, financial gifts, servant hearts, and so much more throughout the last year. God has used your generosity to make an eternal difference in the lives of many throughout the state of Missouri. We’re blessed to serve with you all in this place and at this time.

Knowing what we all know about God and where He will lead, we’re looking forward to the upcoming year of ministry and invite you to continue making the journey with us. Please know that gifts can be made to the Missouri District in a variety of ways:

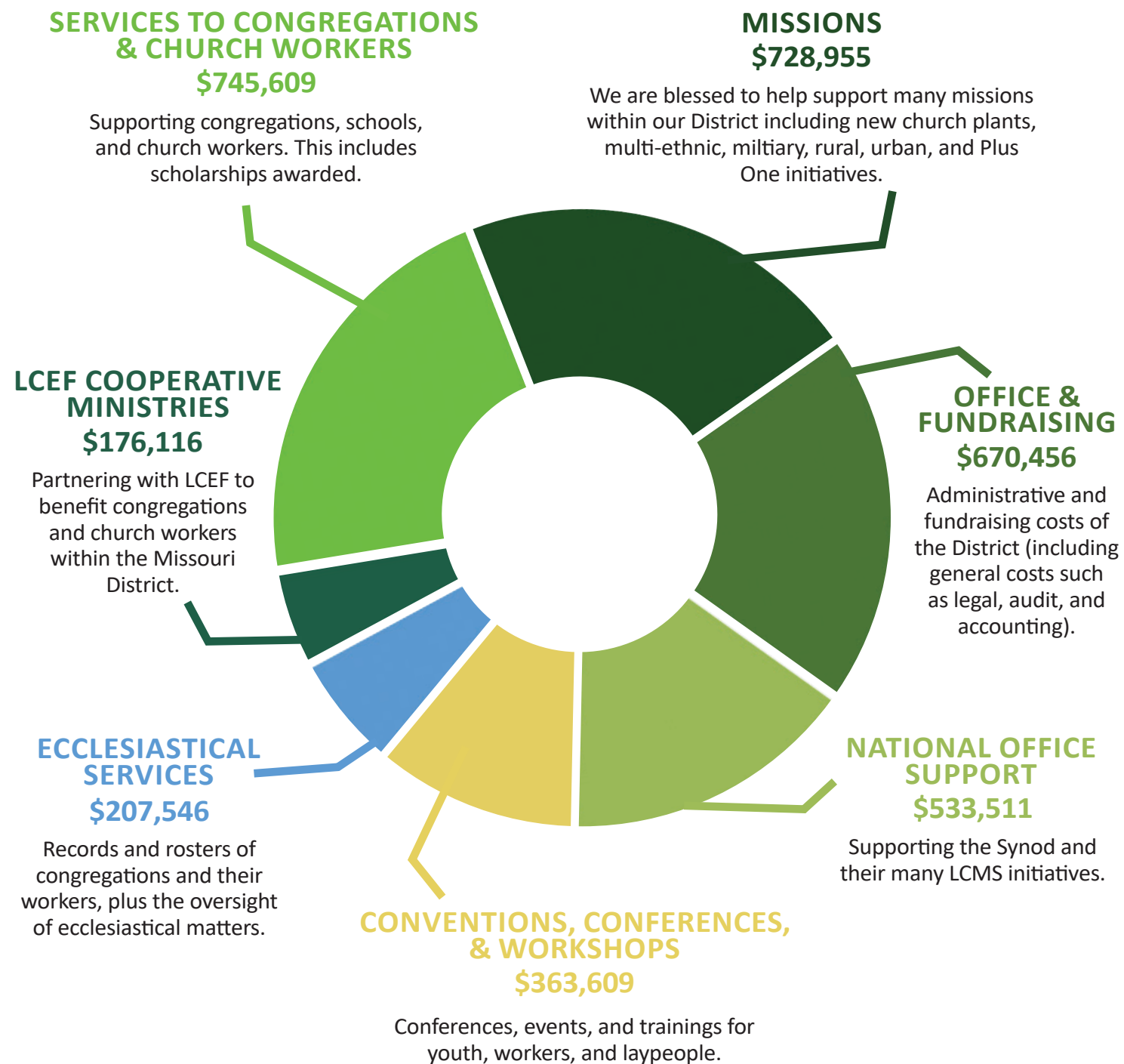
- Sending a gift in the centerfold envelope
- Giving online at mo.lcms.org/donate
- Calling 314-590-6200 for gifts with a credit or debit card
- Using your own envelope and directing a gift to:

Missouri District LCMS 660 Mason Ridge Center Drive, Suite 100 St. Louis, MO 63141

Thank you for your continued support. Should you ever have questions, please feel free to reach out to Leah Sieveking at 314-590-6211 or leah.sieveking@mo.lcms.org.

God’s richest blessings!

2022 MISSOURI DISTRICT BUDGET \$3,425,802



Thank you for joining us in 2022!

26
EVENTS

2,336
ATTENDEES

CAMPUS MINISTRY

Campus Ministry Network | Columbia
International Student Ministry | St. Louis
Lindenwood University | St. Charles
Missouri State University | Springfield
Northwest Missouri State | Maryville
Southeast Missouri State | Cape Girardeau
Saint Louis University–Reliant | St. Louis
University of Central Missouri | Warrensburg
University of Missouri | Columbia

COACHING SUPPORT

Beyond!
Churches Planting Churches
Learning Communities
Plus One
Shared Ministry

MILITARY MINISTRY

Faith Lutheran Church | Knob Noster
Faith Lutheran Church | St. Robert

MULTI-ETHNIC MINISTRY

Amigos de Cristo | Sedalia
Ethiopian & Eritrean Bible Fellowship | St. Louis
Christian Friends of New Americans | St. Louis
Congolesse Ministry | Independence
Hodiamont Outreach | St. Louis
Jesus el Buen Pastor | Kansas City
Light of Christ | St. Louis
Nepalese Ministry | St. Louis
Oromo Outreach | Platte Woods & Riverside
Our Redeemer | Kansas City

MISSION PROJECTS for 2023

NEW STARTS

All Nations | University City
Jefferson Avenue Mission | St. Louis
My Church | Ozark
Northland Lutheran Outreach | Smithville

RURAL & SMALL TOWN MINISTRY

Our Savior Lutheran Church | Buffalo
Women's Maternity Home, Trinity | Clinton

SHARED MINISTRY GRANTS

Barnhardt & Arnold
Bootheel & US 60
Centralia & Columbia
North County St. Louis
Raytown & Independence & Lee's Summit
Rolla Circuit Family Ministry
Southwest Missouri

URBAN MINISTRY

Al1gn | St. Louis
Black Ministry Vicarage | St. Louis
Greater Things | St. Louis
Holy Cross for the Deaf | St. Louis
Immanuel Chapel | St. Louis
Lutheran Urban Mission Agency | Kansas City
Saint Trinity | St. Louis
St. Paul | St. Louis

DISTRICT STAFF

REV. DR. R. LEE HAGAN
President

CASSIE BEHRMANN
Project Coordinator

CASEY CARLSON
District Vice President for LCEF

REV. BILL GEIS
Director of Mission Services

REV. MARTY HASZ, PLPC
Director of Church Worker Support

SARAH IRWIN
Assistant to the President

PETER KREGG
Chief Financial Officer

DANIEL KREIENKAMP, DCE
Director of Family Life & Youth

ELSA MORT
Communications Coordinator

MARTHA SCHELLIN
Rosters & Reporting Assistant

LEAH SIEVEKING
Director of Mission Advancement

JOSHUA SWARTZ
Director of Schools

SUE THOMPSON
Events Assistant & Receptionist

COLLEEN ZARUBA
Meeting & Office Assistant



Missouri District—LCMS
660 Mason Ridge Center Drive, Suite 100
St. Louis, MO 63141

Non-profit Org.
US Postage
PAID
St. Louis, MO
Permit No. 4434

